

VerSus International Student Competition

Poster 2: Project and Solutions

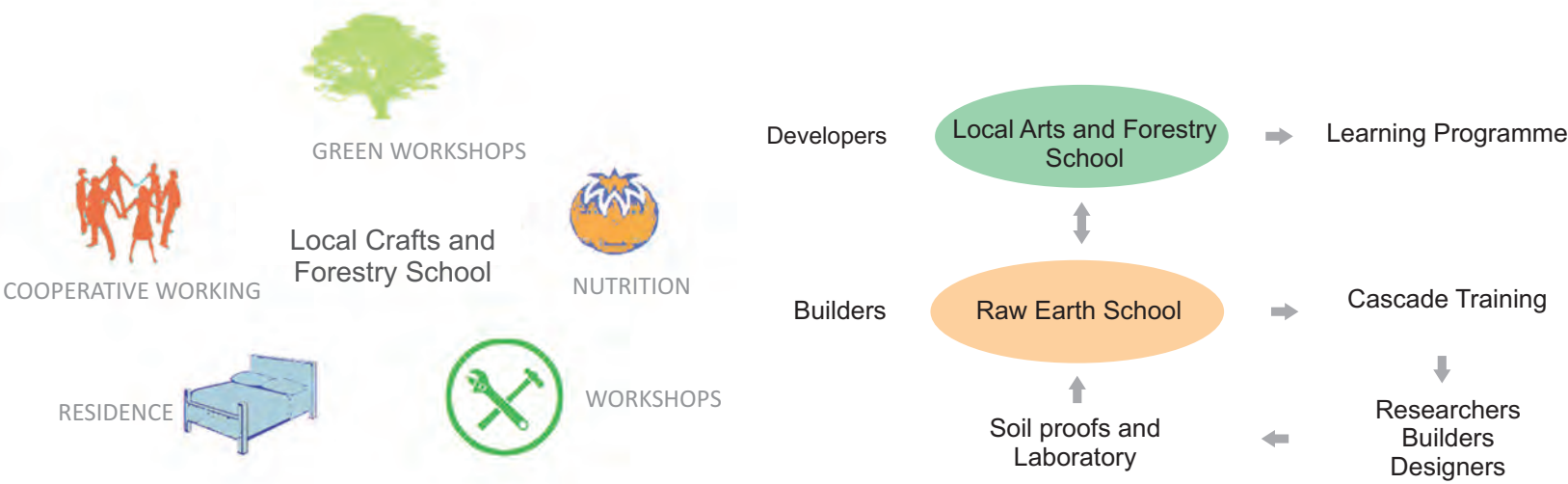
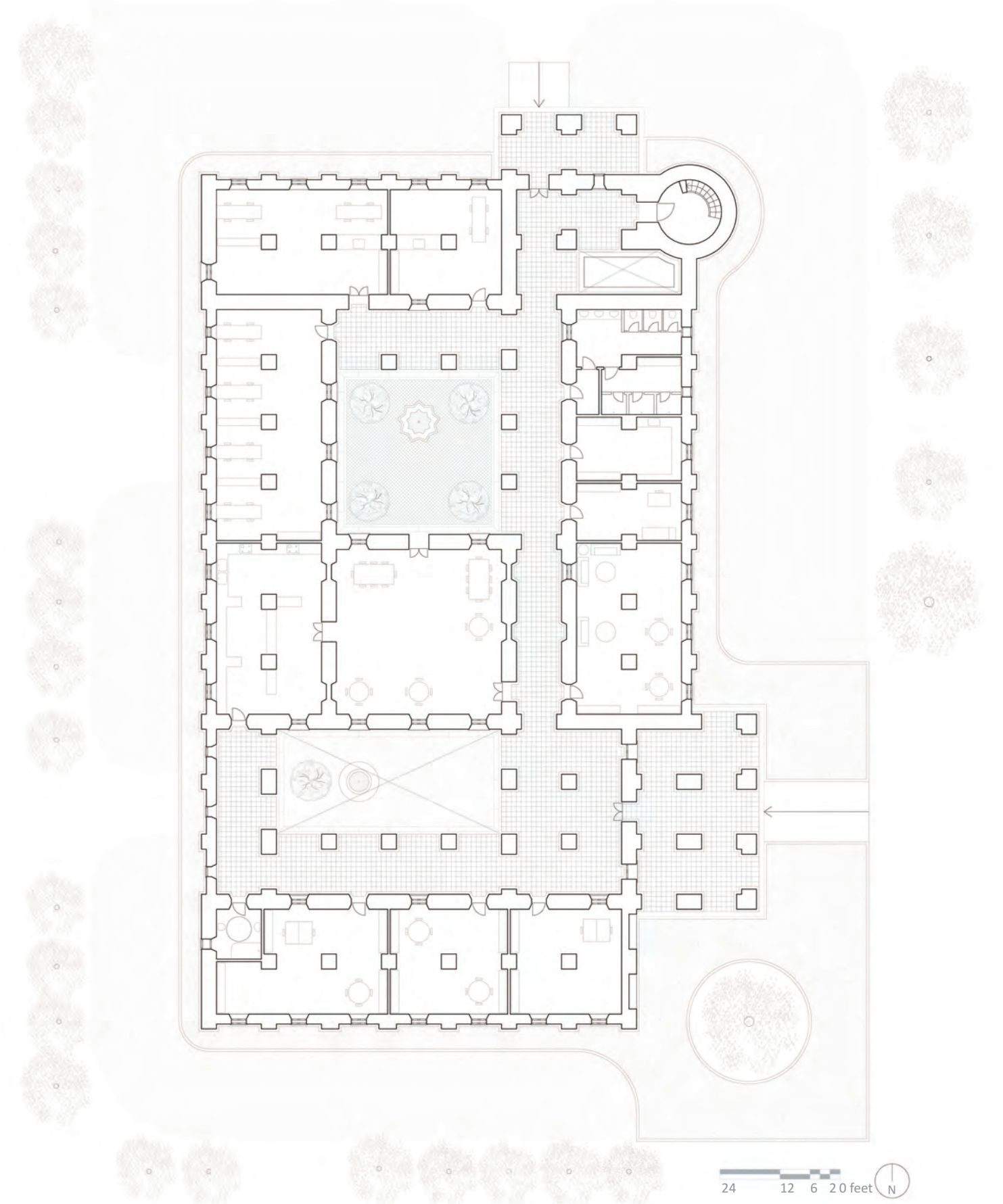
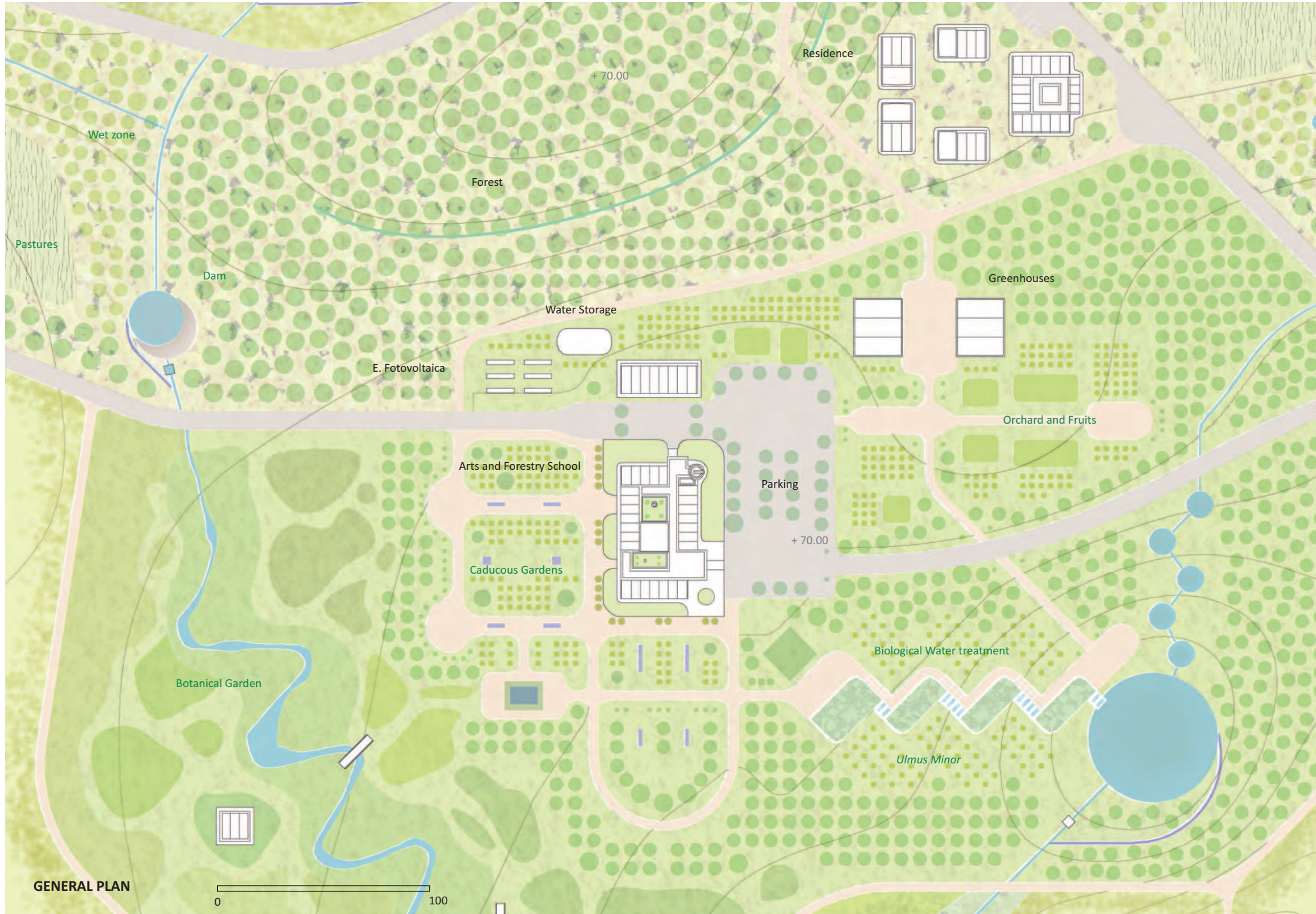
Identificative alphanumeric string code: 5k8fsi36

2

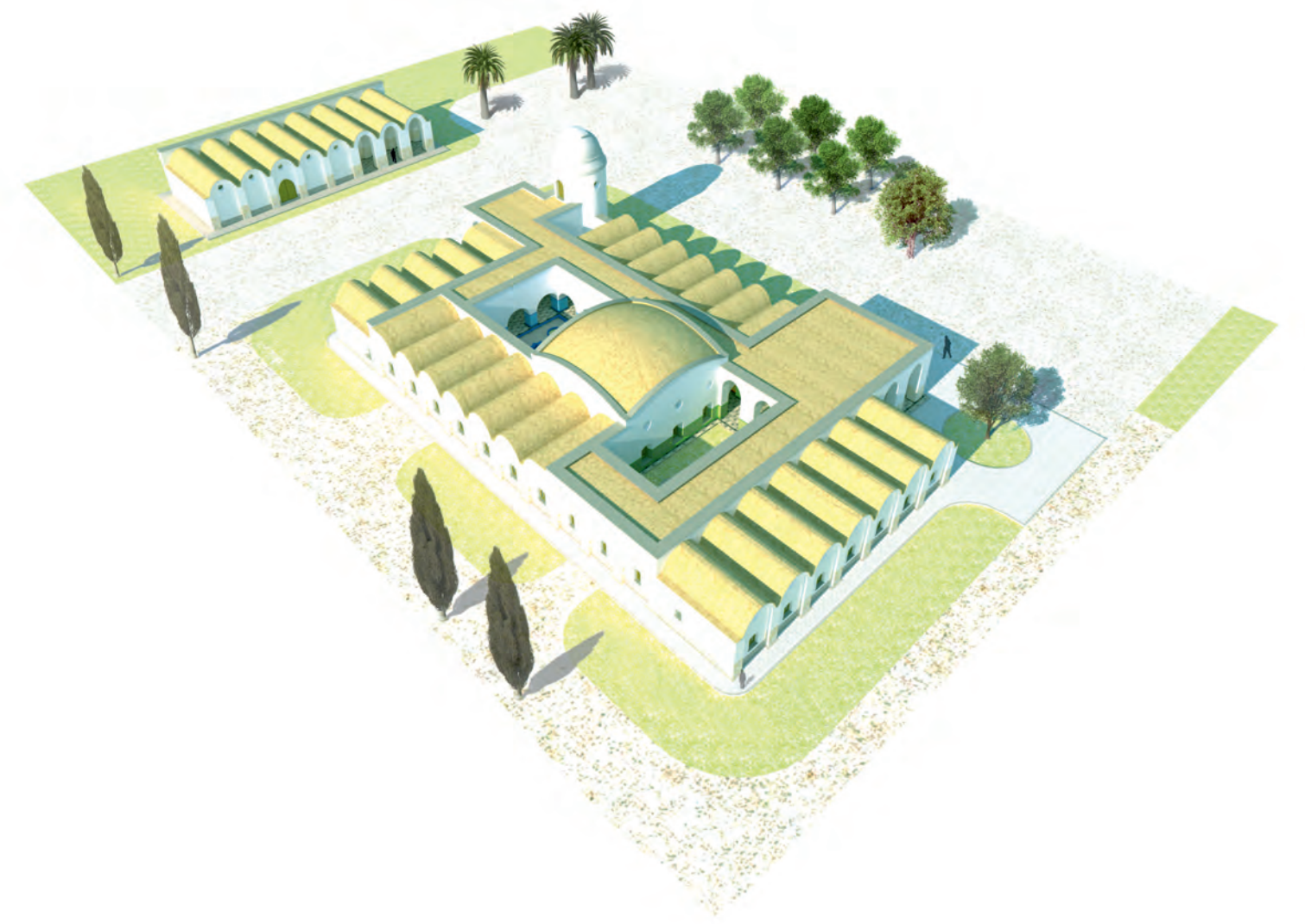
Project Schedule

A School of Forestry and Local Crafts is a specific facility in which a quality team with stable character develop educational intervention programs aimed at raising awareness and training companies to actively participate in the defense and promotion of natural resources. Resources and materials developed or adapted by the team of educators are employed. The purpose is the active participation through experimentation and direct observation of experiential way.

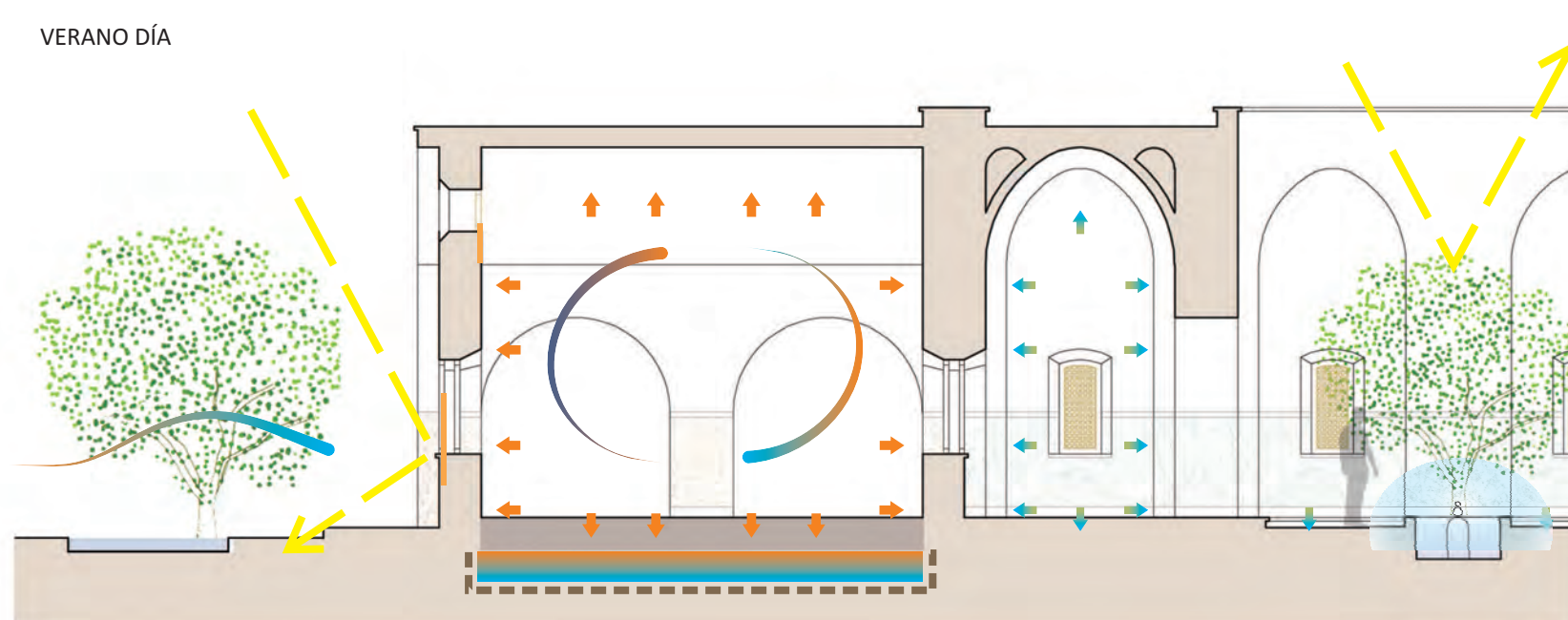
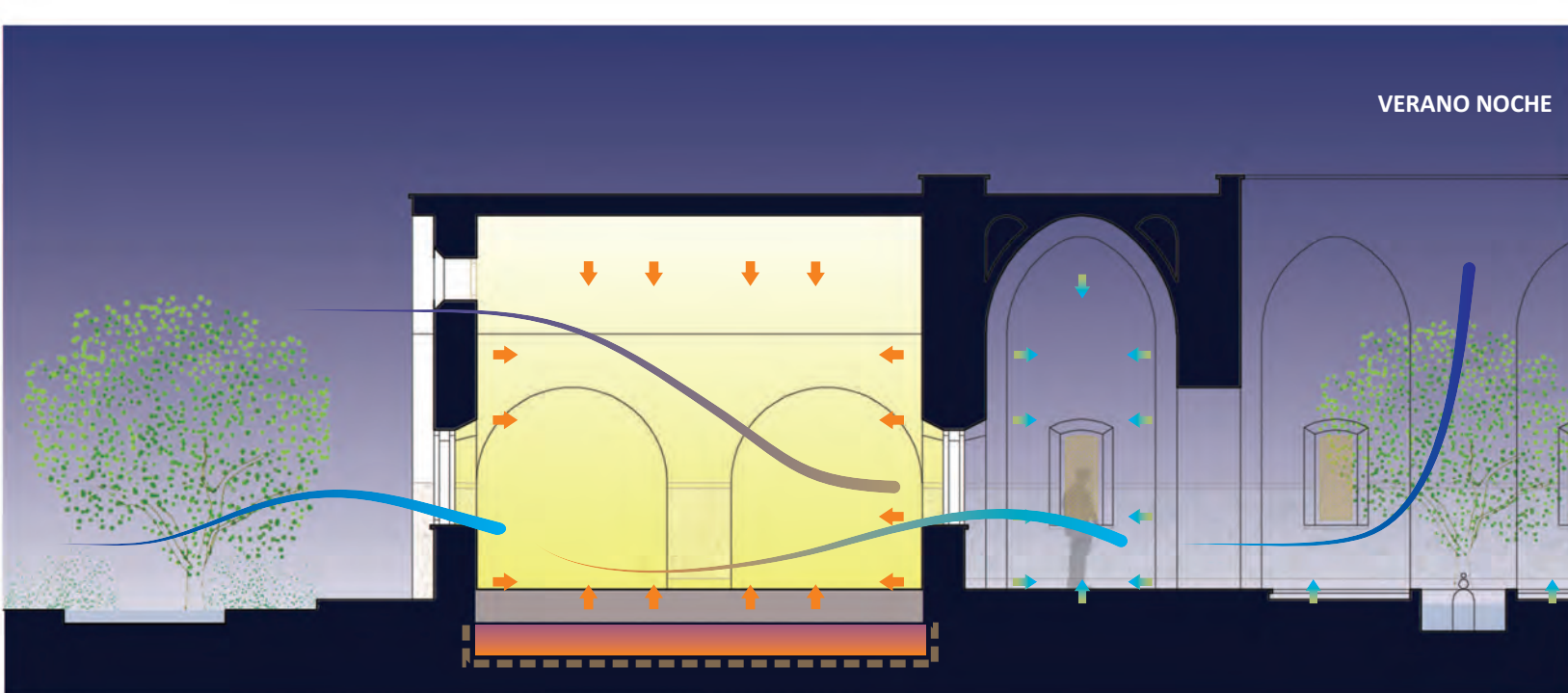
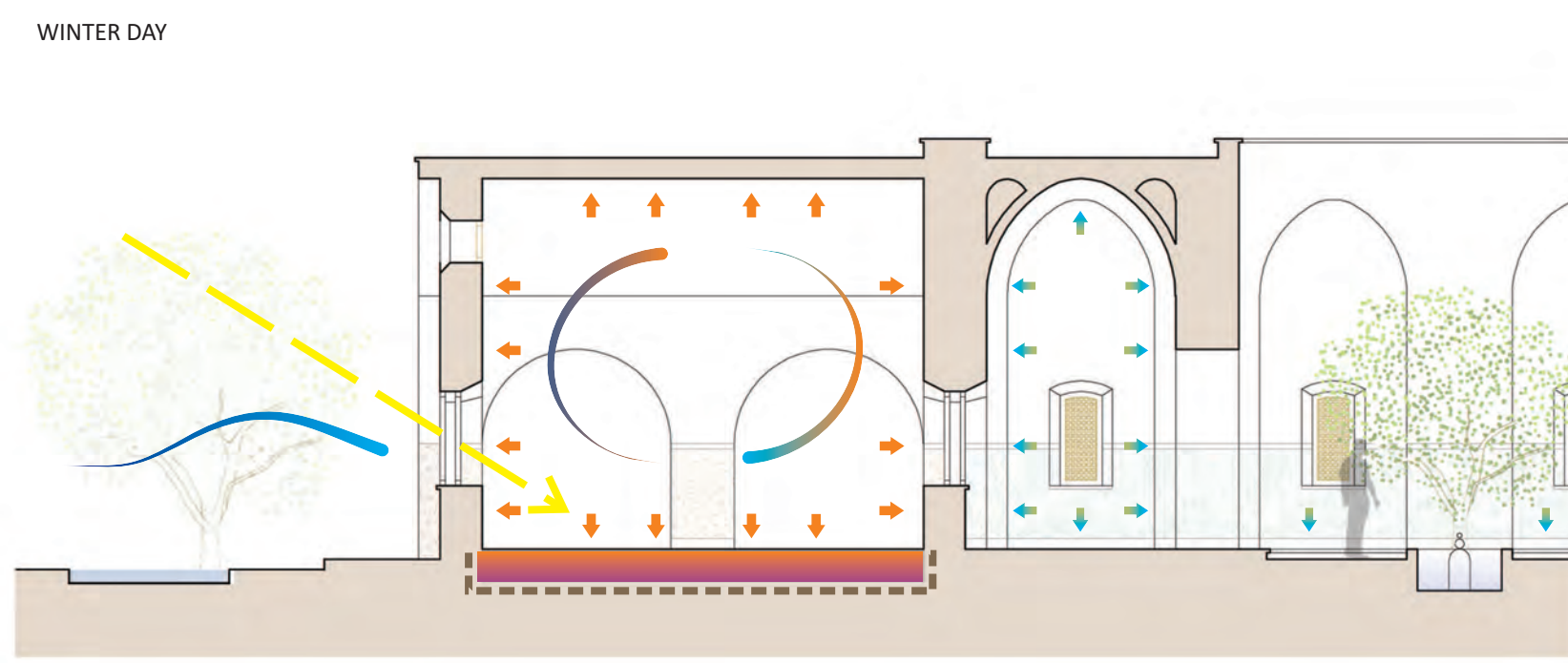
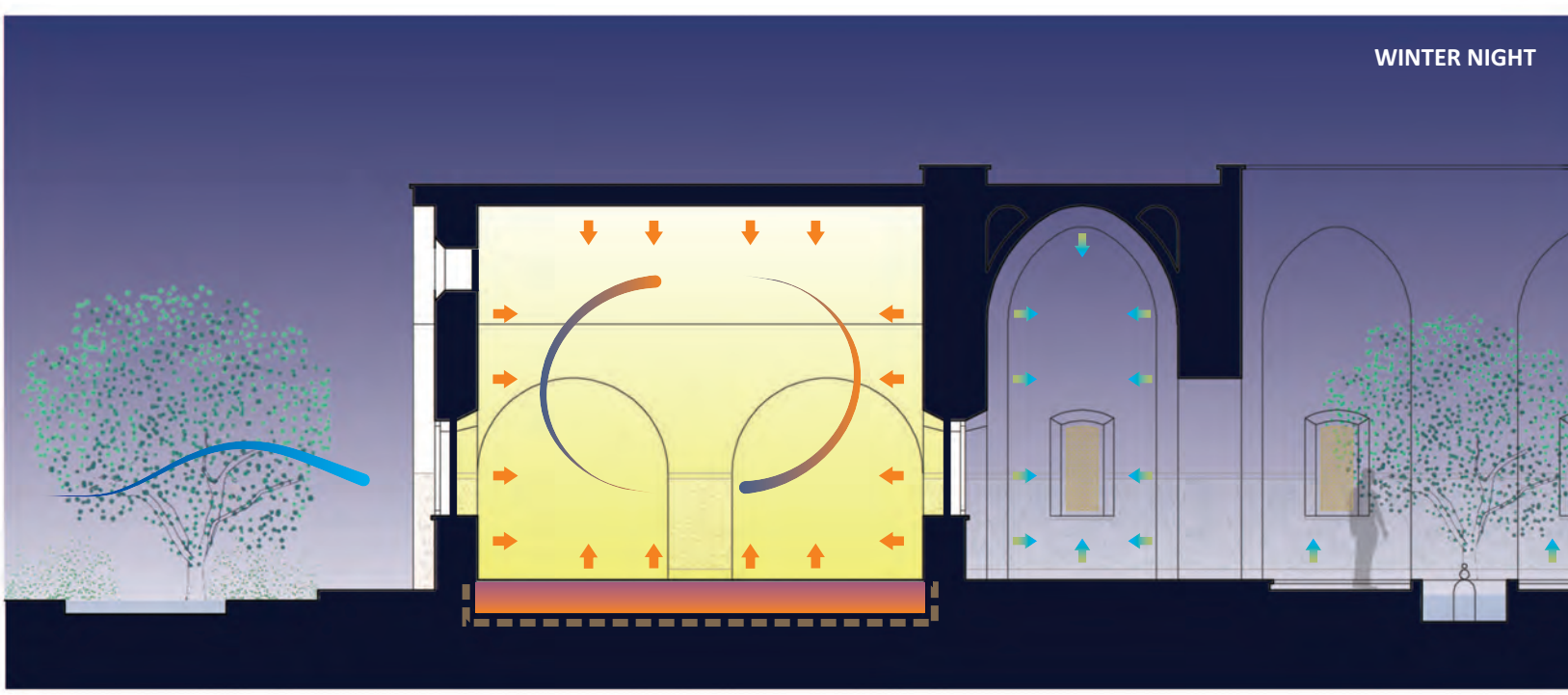
The creation of a new School of Raw Earth will be responsible for performing all facilities with its technical staff and students. Buildings which will be subsequently used by the School of Forestry and local crafts of Gerena (reason of the project), and while the facilities are constructed the work of forestry will begin across the whole estate. Cascade training will be conducted with theoretical and practical classes, forming first a few technical who subsequently would teach others. A lack of local specialists would be replaced with foreign constructors for making adobe elements, commissioning work and the implementation of necessary endings set.



Waste Treatment					
	organics	dregs	urine	grey water	rain
Incoming	compost	separation	wc	separative net	roofs
Treatment	compost	compost	biological plant	biological plant	
Use	fertilizer	fertilizer	irrigation + streams	irrigation + streams	irrigation



Bioclimatism



With the support of the Culture Programme of the European Union

