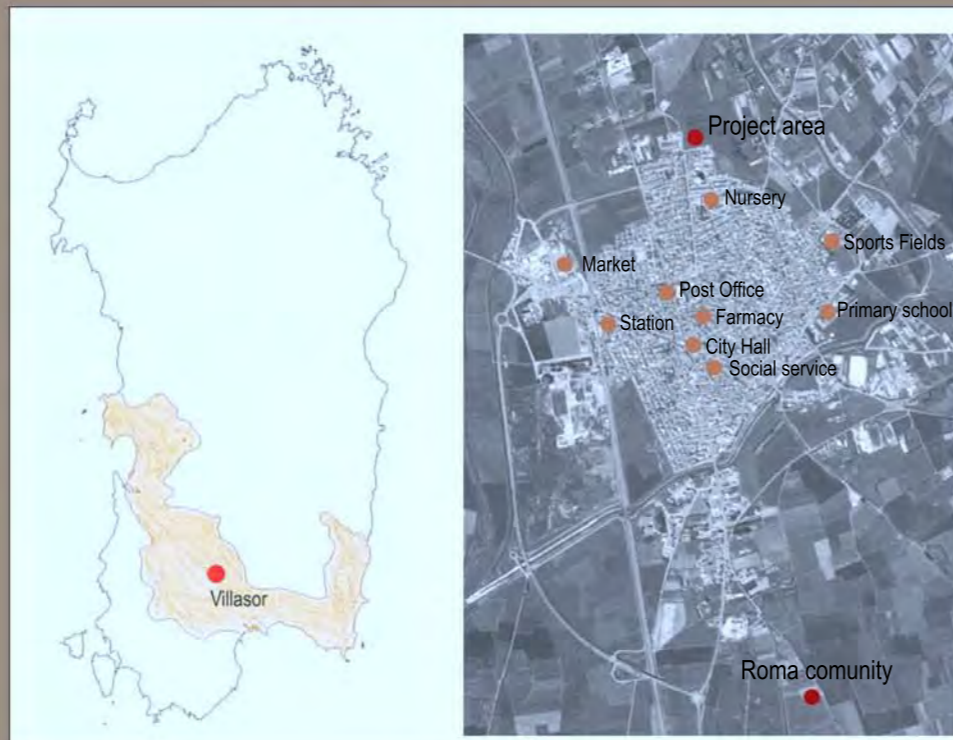


VerSus International Student Competition

Poster 1: Analysis and Concepts

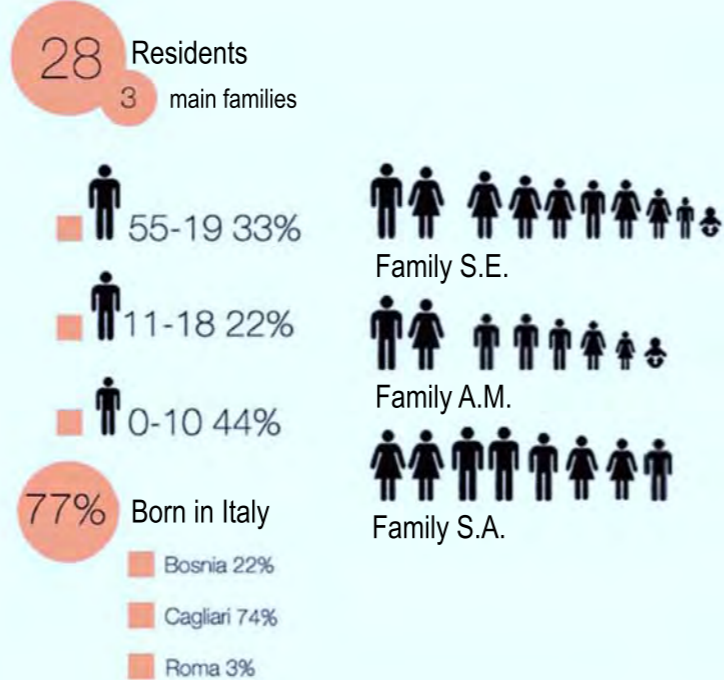
Identificative alphanumeric string code: 3qw6m2ir

1



How they live

Villasor's Roma Community



How they lived

1 Family - S.A. - A.M.
Typology: unit self build
Rooms: 2
Materials: supporting structure in wood and metal, fill in glass and wood
Residents: 14

2 Inhabitant - A.S.
Typology: unit self build
Rooms: 1
Materials: supporting structure in wood, fill in wood
Residents: 1

3 Inhabitant - N.S.
Typology: caravan
Rooms: not specified
Materials: not specified
Residents: not specified

4 Inhabitant - N.S.
Typology: unit mixed self build - caravan
Rooms: not specified
Materials: wood, glass, plastic, plate
Residents: 2

5 Inhabitant - N.S.
Typology: unit mixed self build - caravan
Rooms: not specified
Materials: wood, glass, plastic, plate
Residents: 2

6 Family - S.E.
Typology: unit self build
Rooms: not specified
Materials: not specified
Residents: 10

7 Inhabitant - N.S.
Typology: caravan
Rooms: not specified
Materials: not specified
Residents: not specified

8 Inhabitant - N.S.
Typology: caravan
Rooms: not specified
Materials: not specified
Residents: not specified

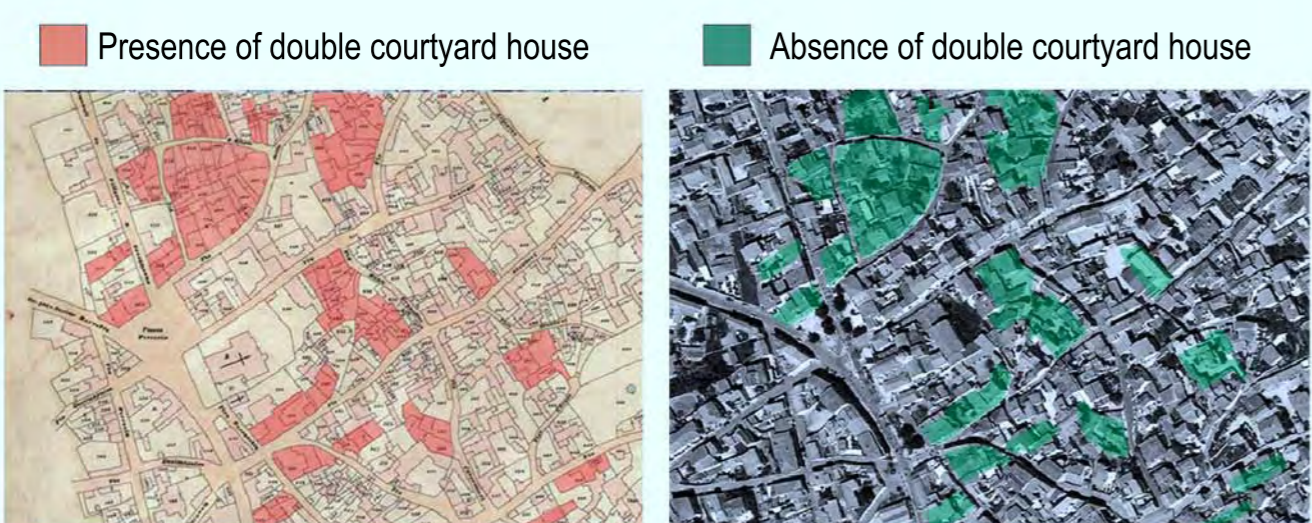
How we lived



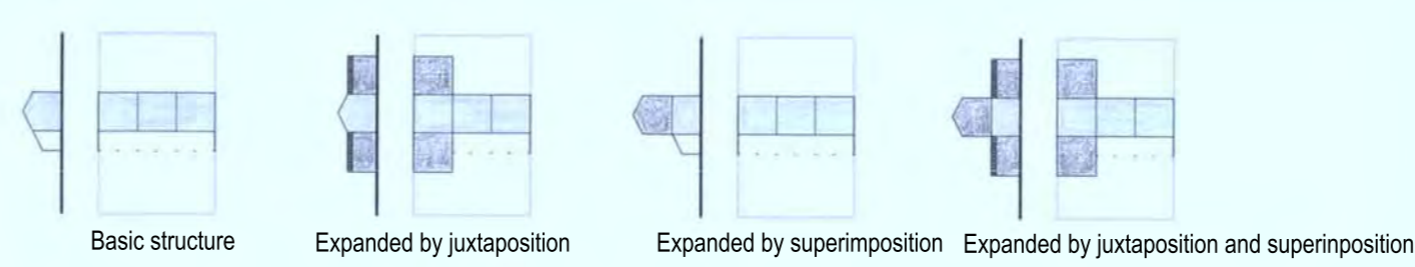
- 1 Family - A.M. - S.A.**
Typology: unit self build
Rooms: 3
- 1 Sleeping area**
Furniture:
1- Table
2- Wardrobe
3- Mattresses
- 2 Living area**
Furniture:
1- Wood-burning stove
2- Shelf
3- Gas cooker
- 3 Outdoor kitchen**
Furniture:
1- Wood-cooker with oven self build
2- Table



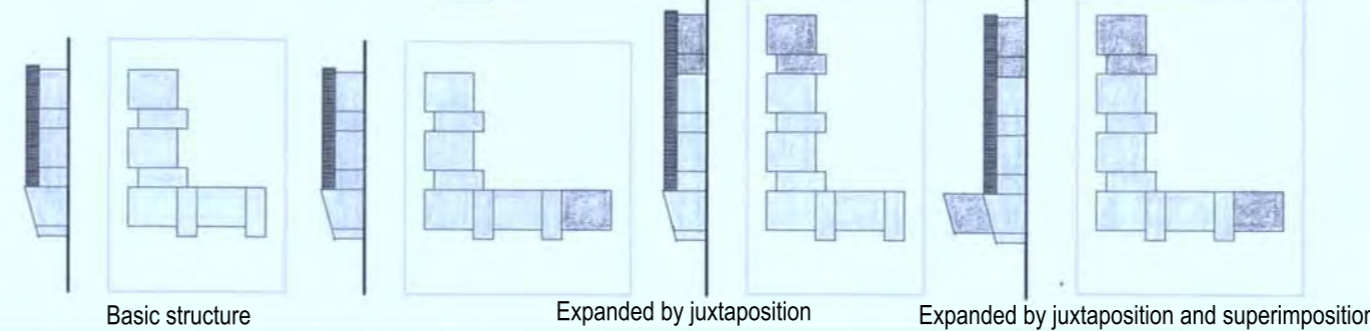
Study of double courtyard house



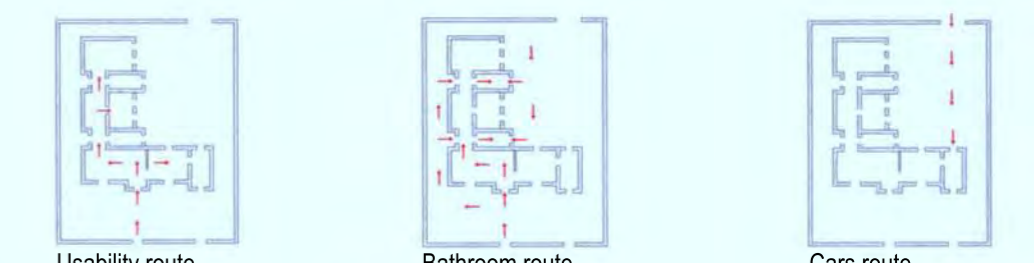
Historical planimetry



Proposal planimetry



Route



Functional schem

